

A MODELS

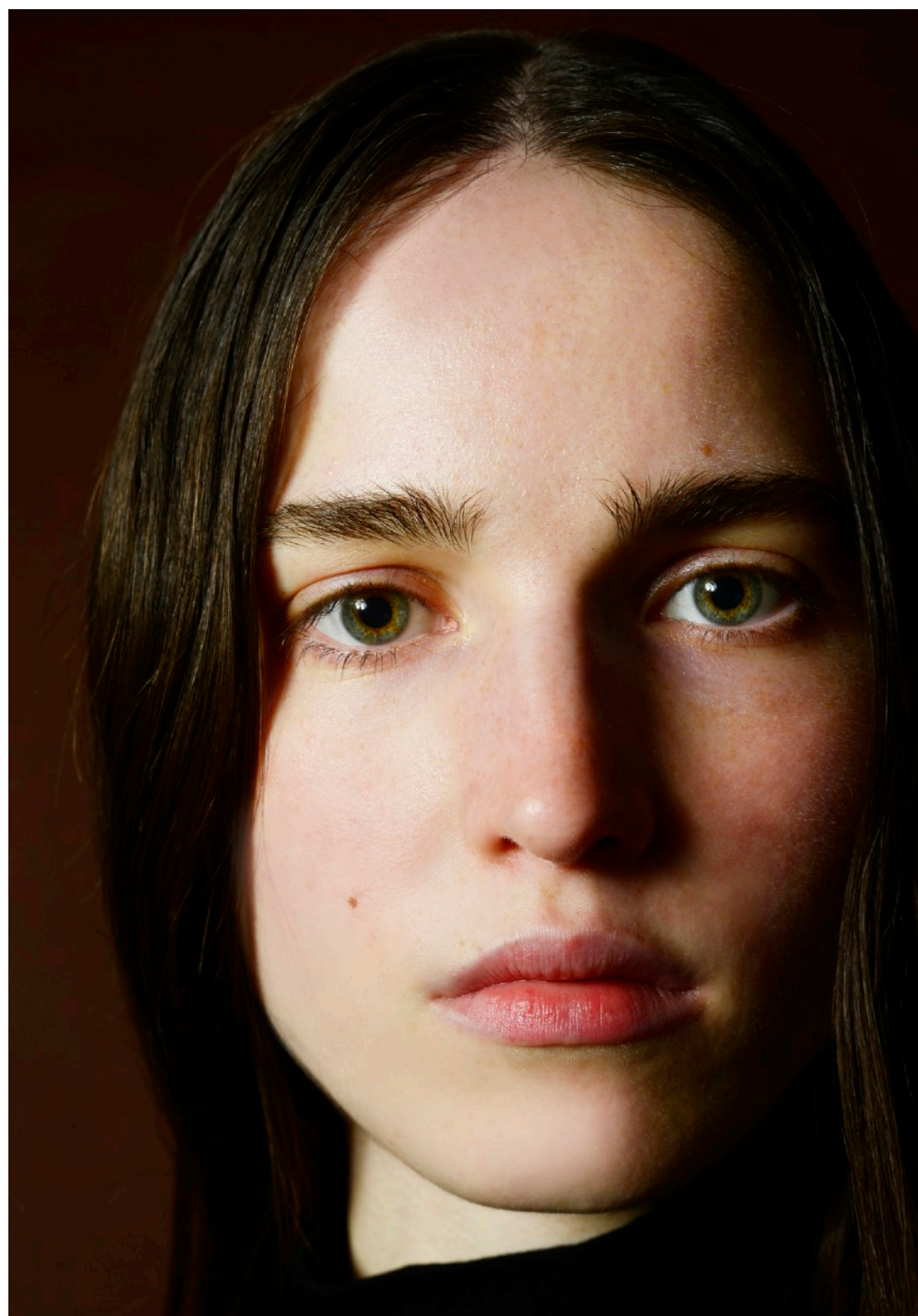
LILLI OSTENDARP

180 | 79-59-86 | SHOES 40,5 | BLUE GREY EYES | BROWN HAIR
20 YRS | DUSSELDORF

















ZIMMERMANN



GABRIELA HEARST



EMPORIO ARMANI



ERMANNO SCERVINO



GIADA



CHRISTIAN DIOR

CRUISE 2026



CHRISTIAN DIOR

PRE-FALL 2025





CHRISTIAN DIOR



GABRIELA HEARST



ERMANNO SCERVINO

CHRISTIAN DIOR
(WORLDWIDE CAMPAIGN)



DIOR

CHRISTIAN DIOR
OPENED & EXCLUSIVE

